

# MIAMI CITY BALLET

2019/20 SEASON



I'M OLD FASHIONED

THIS BITTER EARTH

TSCHAIKOVSKY PAS DE DEUX

SYMPHONIC DANCES

# MIAMI CITY BALLET



"COMPELLING AND  
MYSTERIOUS...  
A MASTERPIECE OF  
MUSICAL NARRATION."

NEW YORK TIMES

## PROGRAM THREE:

# FIREBIRD

Feb 14 – Mar 1

Three inventive works featuring iconic music, each one an exhilarating adventure.

The premiere of **Firebird** is a fantastical fairy tale with magical special effects. Be seduced by the elegance of **Nine Sinatra Songs**, as swirling couples dance to Frank Sinatra's hits. In **Rodeo: Four Dance Episodes**, 15 male dancers and one female enhance Aaron Copland's beloved American score with an infectious sense of play.

Program includes:

**NINE SINATRA SONGS** Tharp / Sinatra

**RODEO: FOUR DANCE EPISODES** Peck / Copland

**FIREBIRD** Balanchine, Robbins / Stravinsky

MIAMI | FORT LAUDERDALE | WEST PALM BEACH

## TICKETS FROM \$30

[miamicityballet.org](http://miamicityballet.org) · 305.929.7010

Nathalia Arja in *Firebird*. Choreography by George Balanchine and Jerome Robbins © The George Balanchine Trust. Photo © Karolina Kuras.



## Dear MCB Family and Friends,

Happy New Year and welcome to the second program of Miami City Ballet's 34<sup>th</sup> season.

The ballets you are about to see show us how strikingly different classical dance can be from one choreographer to another and from

one work to another. They also show us how much feeling can be conjured up by these varied approaches to our art form.

Today's program opens and closes with large ensemble works. While neither has a real plot, both tell a story.

*I'm Old Fashioned* is Jerome Robbins' glamorous tribute to the Golden Age of Hollywood and, more precisely, his homage to the genius of Fred Astaire. The ballet is lighthearted, carefree and humorous – at times conveying a nostalgic longing for a sophisticated world that no longer exists.

In *Symphonic Dances*, Alexei Ratmansky takes Rachmaninoff's last major orchestral work and creates a ballet that depicts three very different worlds. This work is turbulent and dark, filled with anxiety, confusion and mixed messages of love and passion, and

yet everything in the end melds into a complete whole.

Between these large-scale works, we offer two strikingly different pas de deux. These ballets for two dancers are similar in form and structure, and yet they exude completely different emotions. Christopher Wheeldon's *This Bitter Earth* is haunting, soulful and clearly about love that has been mostly lost, but that also leaves the audience wanting more. In contrast, George Balanchine's *Tschaikovsky Pas de Deux* is a joyous masterpiece that combines the virtuosity and lyricism of classical ballet in an exhilarating way that leaves the audience completely gratified.

Presenting these outstanding works would not be possible without the generous support of our South Florida community. We especially extend our gratitude to the Codina family for their generous sponsorship of *I'm Old Fashioned* in Miami, Broward, and the Palm Beaches.

Our warmest regards,

Lourdes Lopez  
Artistic Director

Tania Castroverde  
Moskalenko  
Executive Director

WELCOME | BIENVENIDO

*Thank You*

MIAMI CITY BALLET

FOR YOUR CONTRIBUTION OF EXTRAORDINARY ARTISTRY



## THE COMPANY

### ARTISTIC DIRECTOR

Lourdes Lopez

### EXECUTIVE DIRECTOR

Tania Castroverde Moskalenko

### MUSIC DIRECTOR

### AND PRINCIPAL CONDUCTOR

Gary Sheldon

### PRINCIPAL BALLET MASTER

Roma Sosenko

### BALLET MASTERS

Joan Latham – Arnold Quintane

### COMPANY PIANISTS

John Camacho – Francisco Rennó

### PRINCIPALS

Tricia Albertson – Katia Carranza

Renan Cerdeiro – Rainer Krenstetter

Jennifer Lauren – Alexander Peters

Carlos Quenedit – Kleber Rebello

### PRINCIPAL SOLOISTS

Nathalia Arja – Emily Bromberg

Lauren Fadeley – Shimon Ito

Chase Swatosh

### SOLOISTS

Samantha Hope Galler – Ashley Knox

Jordan-Elizabeth Long – Kathryn Morgan

### CORPS DE BALLET

Alaina Andersen – Itzkan Barbosa – Eric Beckham

Bianca Bulle – Adrienne Carter

Cameron Catazaro – Julia Cinquemani

Bradley Dunlap – Mayumi Enokibara

Samivel Evans – Nina Fernandes

Maddie Goodman – Julian Goodwin-Ferris

Ellen Grocki – Anna Grunewald – Satoki Habuchi

Aaron Hilton – Benjamin Lepson – Suzette Logue

Petra Love – Alex Manning – Madison McDonough

Harrison Monaco – Gustavo Ribeiro – Ariel Rose

Helen Ruiz – Alyssa Schroeder – Christie Scitunno

Luiz Silva – Christina Spigner – Nicole Stalker

Ella Titus – Eric Trope – Ao Wang – Amir Yogev

Damian Zamorano

### FOUNDER

Toby Lerner Ansin

### FOUNDING ARTISTIC DIRECTOR

Edward Villella

*"Miami City Ballet,  
a **JUBILANT** and  
**ENDEARING**  
company, refreshes  
the eyes and spirit."*

New York Times

## THE COMPANY DANCERS

### PRINCIPALS



**TRICIA ALBERTSON**

Santa Cruz, CA

Joined MCB as a member of the Corps in 1997.

Promoted to Principal in 2006.



**KATIA CARRANZA**

Monterrey, Mexico

Danced with Ballet de Monterrey.

Joined MCB as a member of the Corps in 1998.

Promoted to Principal in 2004.

Rejoined MCB in 2017.



**ALEXANDER PETERS**

State College, PA

Danced with Kansas City Ballet and Pennsylvania Ballet.

Joined MCB as a Principal Soloist in 2017.

Promoted to Principal in 2019.



**CARLOS QUENEDIT**

Havana, Cuba

Danced with San Francisco Ballet, Ballet de Monterrey and National Ballet of Cuba.

Joined MCB as a Principal in 2019.



**RENAN CERDEIRO**

Rio de Janeiro, Brazil

Joined MCB as a School  
Apprentice in 2009.

Promoted to Principal  
in 2013.\*



**RAINER KRENSTETTER**

Vienna, Austria

Danced with Vienna  
State Opera Ballet  
and Staatsballett Berlin.

Joined MCB as a Principal  
in 2014.



**JENNIFER LAUREN**

Tuscaloosa, AL

Danced with Alabama Ballet.

Joined MCB as a member of  
the Corps in 2007.

Promoted to Principal  
in 2017.



**KLEBER REBELLO**

Rio de Janeiro, Brazil

Joined MCB as a Company  
Apprentice in 2010.

Promoted to Principal  
in 2013.\*

THE COMPANY  
DANCERS

PRINCIPAL  
SOLOISTS



**NATHALIA ARJA**  
Rio de Janeiro, Brazil

Joined MCB as a School Apprentice in 2009.

Promoted to Principal Soloist in 2016.\*



**EMILY BROMBERG**  
Boston, MA

Danced with Festival Ballet Providence, Colorado Ballet and Ballet San Jose.

Joined MCB as a member of the Corps in 2010.

Promoted to Principal Soloist in 2019.



**LAUREN FADELEY**  
Orlando, FL

Danced with New York City Ballet and Pennsylvania Ballet.

Joined MCB as a Soloist in 2016.

Promoted to Principal Soloist in 2017.



**SHIMON ITO**  
New York, NY

Danced with Ballet San Jose.

Joined MCB as a member of the Corps in 2011.

Promoted to Principal Soloist in 2019.

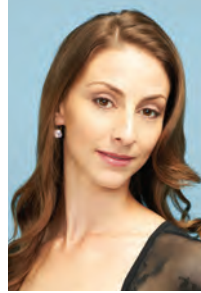


**CHASE SWATOSH**  
Westlake Village, CA

Joined MCB as a Company Apprentice in 2010.

Promoted to Principal Soloist in 2019.

SOLOISTS



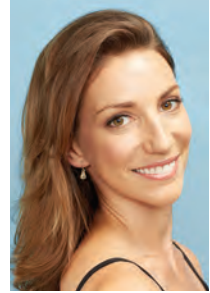
**SAMANTHA HOPE  
GALLER**

Bedford, MA

Danced with Boston Ballet, Cincinnati Ballet and Alabama Ballet.

Joined MCB as a member of the Corps in 2014.

Promoted to Soloist in 2018.



**ASHLEY KNOX**

Shelby Township, MI

Joined MCB as a Company Apprentice in 2002.

Promoted to Soloist in 2017.\*

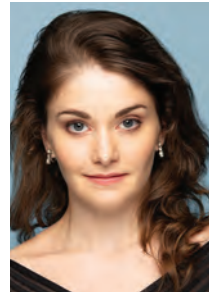


**JORDAN-ELIZABETH  
LONG**

Blacksburg, VA

Danced with Dutch National Ballet and Royal Swedish Ballet.

Joined MCB as a Soloist in 2014.



**KATHRYN MORGAN**

Mobile, AL

Danced with New York City Ballet.

Joined MCB as a Soloist in 2019.

## THE COMPANY DANCERS

### CORPS DE BALLET



**ALAINA  
ANDERSEN**  
Milwaukee, WI

Joined MCB  
as an Apprentice  
in 2014.

Promoted to  
Corps de Ballet  
in 2016.\*+



**ITZKAN  
BARBOSA**  
New York, NY

Joined MCB as  
a member of the  
Corps in 2019.\*



**ERIC BECKHAM**  
Columbia, SC

Danced with  
The National  
Ballet of Canada.

Joined MCB as  
a member of the  
Corps in 2017.



**BIANCA BULLE**  
Queensland,  
Australia

Danced with  
The Los Angeles  
Ballet.

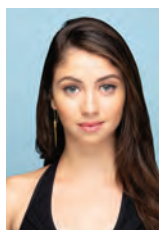
Joined MCB as  
a member of the  
Corps in 2019.



**ADRIENNE  
CARTER**  
Kennesaw, GA

Joined MCB  
as a Company  
Apprentice in  
2010.

Promoted to  
Corps de Ballet  
in 2011.\*



**NINA  
FERNANDES**  
Rio de Janeiro,  
Brazil

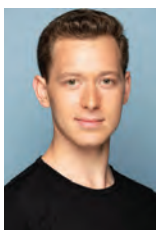
Danced with  
Houston Ballet.

Joined MCB as  
a member of the  
Corps in 2018.



**MADDIE  
GOODMAN**  
New Bern, NC

Joined MCB as  
a member of the  
Corps in 2019.



**JULIAN  
GOODWIN-  
FERRIS**  
Houston, TX

Joined MCB as  
a member of the  
Corps in 2019.



**ELLEN GROCKI**  
Damascus, MD

Joined MCB  
as an Apprentice  
in 2013.

Promoted to  
Corps de Ballet  
in 2014.\*+



**ANNA  
GRUNEWALD**  
Pittsburgh, PA

Danced with  
Ballet Arizona.

Joined MCB as  
a member of the  
Corps in 2019.



**CAMERON  
CATAZARO**  
Canton, OH

Joined MCB as  
a member of the  
Corps in 2019.\*



**JULIA  
CINQUEMANI**  
Dallas, TX

Danced with  
The Los Angeles  
Ballet.

Joined MCB as  
a member of the  
Corps in 2017.



**BRADLEY  
DUNLAP**  
Cleveland, OH

Joined MCB  
as a School  
Apprentice in  
2005.

Promoted to  
Corps de Ballet  
in 2008.\*

*Company  
Representative*



**MAYUMI  
ENOKIBARA**  
Rio de Janeiro,  
Brazil

Joined MCB  
as an Apprentice  
in 2013.

Promoted to  
Corps de Ballet  
in 2015.\*+



**SAMIVEL EVANS**  
Santa Fe, NM

Danced with  
Boston Ballet.

Joined MCB as  
a member of the  
Corps in 2019.



**SATOKI  
HABUCHI**  
Osaka, Japan

Joined MCB as  
a member of the  
Corps in 2018.\*



**AARON HILTON**  
Washington, D.C.

Danced with  
Boston Ballet II.

Joined MCB as  
a member of the  
Corps in 2017.



**BENJAMIN  
LEPSON**  
New York, NY

Joined MCB as  
a member of the  
Corps in 2019.



**SUZETTE LOGUE**  
Sarasota, FL

Danced with  
Pennsylvania  
Ballet and  
Boston Ballet.

Joined MCB  
as a Company  
Apprentice  
in 2010.

Promoted to  
Corps de Ballet  
in 2011.\*



**PETRA LOVE**  
New York, NY

Joined MCB as  
a member of the  
Corps in 2018.\*



**ALEX MANNING**  
State College, PA

Joined MCB  
as an Apprentice  
in 2013.

Promoted to  
Corps de Ballet  
in 2014.\*



**MADISON  
MCDONOUGH**  
Miami Beach, FL

Danced with  
The Los Angeles  
Ballet.

Joined MCB as  
a member of the  
Corps in 2018.\*



**HARRISON  
MONACO**  
New Berlin, WI

Danced with  
Pennsylvania  
Ballet.

Joined MCB as  
a member of the  
Corps in 2017.



**GUSTAVO  
RIBEIRO**  
Vitoria, Brazil

Danced with  
Kansas City  
Ballet.

Joined MCB as  
a member of the  
Corps in 2018.



**ARIEL ROSE**  
New York, NY

Danced with  
Boston Ballet,  
Ballet Municipal  
de Lima and  
Richmond Ballet.

Joined MCB as  
a member of the  
Corps in 2013.



**NICOLE STALKER**  
St. Petersburg, FL

Joined MCB  
as a Company  
Apprentice  
in 2008.

Promoted to  
Corps de Ballet  
in 2009.\*



**ELLA TITUS**  
Clearwater, FL

Joined MCB  
as an Apprentice  
in 2013.

Promoted to  
Corps de Ballet  
in 2015.\*



**ERIC TROPE**  
Poolesville, MD

Danced with  
Pennsylvania  
Ballet.

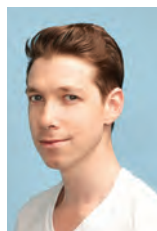
Joined MCB as  
a member of the  
Corps in 2013.



**AO WANG**  
Beijing, China

Danced with  
The Washington  
Ballet Studio  
Company.

Joined MCB as  
a member of the  
Corps in 2016.



**AMIR YOGEV**  
Kibbutz, Israel

Danced with  
Pennsylvania  
Ballet.

Joined MCB as  
a member of the  
Corps in 2016.



**HELEN RUIZ**

San Juan,  
Puerto Rico

Joined MCB  
as a Company  
Apprentice  
in 2007.

Promoted to  
Corps de Ballet  
in 2009.



**ALYSSA  
SCHROEDER**

Portland, OR

Joined MCB as  
a member of the  
Corps in 2017.



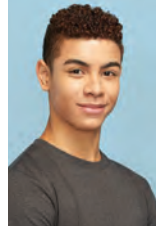
**CHRISTIE  
SCITURRO**

Sterling Heights,  
MI

Joined MCB  
as a School  
Apprentice  
in 2006.

Promoted to  
Corps de Ballet  
in 2008.\*

*Company  
Representative*



**LUIZ SILVA**

Barra Mansa,  
Brazil

Joined MCB  
as an Apprentice  
in 2015.

Promoted to  
Corps de Ballet  
in 2016.\*



**CHRISTINA  
SPIGNER**

Paradise Valley, AZ

Joined MCB  
as a Company  
Apprentice  
in 2012.

Promoted to  
Corps de Ballet  
in 2013.\*



**DAMIAN  
ZAMORANO**

Havana, Cuba

Danced with  
Compañía  
Nacional De  
Danza.

Joined MCB as  
a member of the  
Corps in 2013.\*+

\*Miami City Ballet School Alumni

+Toby Lerner Ansin Scholarship Award Recipient

Dancer headshots: Photos © Alberto Oviedo and Alexander Iziliaev.

# LOOKING AHEAD: TAKING FLIGHT

## THE MAKING OF FIREBIRD



*Firebird*, the magical Russian folkloric ballet that propelled New York City Ballet to stardom in 1949 is about to soar straight into the hearts of South Florida audiences when it debuts this February in Miami.

This is no easy feat. In fact, this is the first time the beloved George Balanchine/Jerome Robbins masterpiece will be performed by a company outside of New York City Ballet. Why is it that this sensational *Firebird* has been so elusive? Artistic Director, Lourdes Lopez explains:

"The ballet has designs by Marc Chagall. When NYC Ballet moved from City Center to the Koch Theater, Chagall himself painted most of the sets, including the tapestry that was put on the floor. As a dancer, when you step on to it, you think, wow, I'm stepping on something truly priceless."

"*Firebird* is a ballet that I have grown up around, and I have always loved it. At 14, I was one of the supers, later I was a monster, then a princess, and finally the *Firebird*. I've had my eye on bringing it to Miami City Ballet for some time but wasn't quite sure how to do this. Then it occurred to me, when we did the new *Nutcracker* sets and costumes, maybe there's a way to pay homage to Chagall through projections. I approached the Robbins and Balanchine Trusts. They said, 'Well instead of that, why don't you just redesign it.' This isn't a reimagining like our *Midsummer Night's Dream*, where we've taken the ballet from one setting to another... *Firebird* still takes place in its original Russian folkloric setting but this one isn't Chagall. The choreography, however, is still Balanchine and Robbins." (Balanchine did most of the choreography, while Robbins did the monster section.)





To bring *Firebird* to life Lourdes tapped projectionist Wendall Harrington, AKA the Queen of Projection and designer of countless Broadway productions, including Disney's *Beauty and the Beast*. As the two collaborated, they both felt strongly that the beauty in *Firebird* is that you have three of Russia's most prolific and celebrated artists – you have Igor Stravinsky, George Balanchine, and Marc Chagall. *Firebird* is Russian folklore that simply cannot be set anywhere else. This led them to Anya Klepikov, who has taken the reigns of costume and set design.

Anya Klepikov, the much sought-after costume designer of opera and theater, explains her connection to *Firebird*:

"When I was a child growing up on the Crimean Peninsula, my mother's friend, who was an artist, she had this tiny business on the side. She would decorate kitchen cutting boards with images of the Firebird, so that is my most vibrant encounter with the Firebird from my childhood. I still have a cutting board like that in my kitchen, so when this show happened in my life, it was a very intimate connection for me. I never saw it live, but I grew up in Russia until the age of 11, well, it was Ukraine, Crimean Peninsula, watching ballet and admiring the dancers."

*Firebird* debuts on Feb 14 with performances in Miami, Broward and West Palm Beach through March 1.

**Tickets at [miamicityballet.org](http://miamicityballet.org).**

**I'M OLD FASHIONED** Robbins/Gould

**THIS BITTER EARTH** Wheeldon/Richter, Otis

**TSCHAIKOVSKY PAS DE DEUX** Balanchine/Tchaikovsky

**SYMPHONIC DANCES** Ratmansky/Rachmaninoff



**ARSHT CENTER, January 10 – 12, 2020**

**KRAVIS CENTER, January 17 – 19, 2020**

**BROWARD CENTER, January 25 – 26, 2020**

***I'm Old Fashioned*** – Miami City Ballet premiere: January 10, 2020 Adrienne Arsht Center for the Performing Arts; Miami, FL.

***This Bitter Earth*** – Miami City Ballet premiere: January 10, 2020 Adrienne Arsht Center for the Performing Arts; Miami, FL.

***Tchaikovsky Pas De Deux*** – Miami City Ballet premiere: October 17, 1986 Gusman Center for the Performing Arts; Miami, FL.

***Symphonic Dances*** – Miami City Ballet and World premiere: March 1, 2012 Adrienne Arsht Center for the Performing Arts; Miami, FL.



## I'M OLD FASHIONED

---

Choreography by **Jerome Robbins**

Music by **Morton Gould**, based on a theme by **Jerome Kern\***

Staged by **Christine Redpath**

Costume Design by **Florence Klotz**

Lighting Design by **Ronald Bates**

Lighting recreated by **Mark Stanley**

This tribute to the Golden Age of Hollywood features the supremely glamorous Fred Astaire and Rita Hayworth on a huge screen, dancing and gliding alongside our own Miami dancers. Fred and Rita were the stars of the wartime musical *You Were Never Lovelier*, for which Jerome Kern wrote the ravishing song "I'm Old Fashioned." Years later Jerome Robbins, at the height of his powers, used that song and Astaire's choreography as the basis for this brilliantly sophisticated theme-and-variations ballet – an audience favorite ever since. The opening night review in *The New York Times* was that "rather than offer an imitation Astaire ballet, Mr. Robbins has given him a genuine Robbins ballet...the greatest tribute Robbins could have paid to Mr. Astaire."

Run-time: 36 minutes

\**I'm Old-Fashioned* (film sequence from *You Were Never Lovelier*, starring Fred Astaire and Rita Hayworth).

By arrangement with G. Schirmer, INC. publisher and copyright owner.

Performed by permission of The Robbins Rights Trust

Miami City Ballet wishes to thank the Codina Family, leading sponsors of *I'm Old Fashioned*.

Miami-Dade County performances of *I'm Old Fashioned* are supported by Funding Arts Network, Inc. Broward County performances of *I'm Old Fashioned* are supported by Funding Arts Broward, supporting innovative local visual and performing arts in Broward County.



## THIS BITTER EARTH

Choreography by **Christopher Wheeldon®**

Music by **Max Richter and Clyde Otis\***

Staged by **Jason Fowler**

Costume Design by **Reid Bartelme**

Lighting Design by **Mary Louise Geiger**

Lighting recreated by **Mark Stanley**

*This Bitter Earth* fills up the room and takes your breath away with its potent, smoldering beauty. Dinah Washington's soulful 1960 hit, remixed with the gorgeously haunting "On the Nature of Daylight" by Max Richter, is the perfect soundtrack for Christopher Wheeldon's pas de deux about love lost — and, perhaps, found.

Run-time: 8 minutes

\**This Bitter Earth* performed by Dinah Washington.



## TSCHAIKOVSKY PAS DE DEUX

Choreography by **George Balanchine** © The George Balanchine Trust

Music by **Peter Ilyich Tchaikovsky**\*

Staged by **Miami City Ballet**

Costume Design by **Haydée Morales**

This joyous little masterpiece has been in the world's repertory for sixty years now. Originally composed by Tchaikovsky for the (failed) first version of *Swan Lake*, Balanchine rescued its music from obscurity to create one of the most popular of his ballets, combining thrilling virtuosic demands with an enchanting floating lyricism — all climaxed when the ballerina flings herself headlong across the stage into a fish dive while the audience gasps!

Run-time: 12 minutes

\*Excerpt from *Swan Lake*, Op. 20, Act III

*Tschaikovsky Pas de Deux* was generously underwritten by Jacqueline and Irwin E. Kott.

The performance of *Tschaikovsky Pas de Deux*, a Balanchine® Ballet, is presented by arrangement with The George Balanchine Trust and has been produced in accordance with the Balanchine Style® and Balanchine Technique®, Service Standards established and provided by The Trust.



## SYMPHONIC DANCES

Choreography by **Alexei Ratmansky®**

Music by **Sergei Rachmaninoff\***

Costume Design by **Adeline André**

Lighting recreated by **Mark Stanley**

In 2012 Alexei Ratmansky, by common consent, the world's leading classical choreographer, created a major work for Miami City Ballet.

The music he chose to work with is Sergei Rachmaninoff's final important composition, his large-scale "Symphonic Dances" of 1941 – a work whose turbulent energy and deep emotion perfectly complement the dance qualities for which the company is famous.

"There is no real story," Ratmansky says. "I want the audience to leave with the images and feelings that the movement gives them." Yet again and again we sense that there are hidden stories, hidden conflicts and resolutions, propelling the large cast through the piece's three gripping sections.

"Alexei Ratmansky's *Symphonic Dances* is electrifying," raved the *Miami Herald*. "A dramatic and physical whirlwind. Haunting and intoxicating. Tumultuously beautiful. A cheering, to-the-balconies standing ovation."

It was immediately apparent that this ballet is an important addition not only to MCB's repertory but to the international repertory as well.

Run-time: 39 minutes

\**Symphonic Dances*, *Opus 45*. By arrangement with Boosey & Hawkes, Inc. publisher and copyright owner.

Miami City Ballet thanks Harriet and Henry Pownall, lead underwriters of the World Premiere of *Symphonic Dances*. Additional underwriting was provided through the New Works fund by the John S. and James L. Knight Foundation, as part of its Knight Arts Challenge, and Ophelia and Juan Js. Roca.

## BIOS

### CHRISTOPHER WHEELDON

CHOREOGRAPHER – *THIS BITTER EARTH*

Christopher Wheeldon, O.B.E. (Director & Choreographer) trained at The Royal Ballet School and joined The Royal Ballet in 1991. In 1993, he joined New York City Ballet (NYCB) and was promoted to Soloist in 1998. He was named NYCB's first Resident Choreographer in July 2001. Since then, he has created and staged productions for many of the world's major ballet companies.

In 2007, Wheeldon founded Morphoses/The Wheeldon Company and was appointed an Associate Artist for Sadler's Wells Theatre in London. He now serves as Artistic Associate of The Royal Ballet and has created many works for the company including *Alice's Adventures in Wonderland* and *The Winter's Tale*. Career highlights include directing and choreographing the musical version of *An American In Paris*, which had productions in Paris, on Broadway, and in London (2014). The world premiere of The Joffrey Ballet's *The Nutcracker* (2016), the gala presentation of Lerner & Leowe's *Brigadoon* at New York City Center (2017), *An American In Paris* and *Alice's Adventures in Wonderland* in Tokyo, and the premiere for *Corybantic Games* and a re-staged version of *Cinderella* (2019).



Among Wheeldon's awards are a Tony Award® for Best Choreography, an Outer Critics Award for Best Choreography and Direction, the Martin E. Segal Award from Lincoln Center, the American Choreography Award, the Dance Magazine Award, multiple London Critic's Circle Awards, the Léonide Massine Prize for new choreography, the Benois de la Danse, and he is an Olivier Award winner. In 2016, he was named an O.B.E. and was made an Honorary Fellow of the American Academy of Arts and Sciences.

## BIOS

### BEATRICE JONA AFFRON

GUEST CONDUCTOR

Beatrice Jona Affron has been Music Director and Conductor of Pennsylvania Ballet since 1997. She has led many Balanchine ballets as well as other classics, such as *The Sleeping Beauty*, *Romeo and Juliet*, and *The Firebird*. Also in Philadelphia, she conducted the world premiere performances of Christopher Wheeldon's *Swan Lake*. A graduate of Yale University, Ms. Affron studied conducting with Robert Spano and Pascal Verrot at New England Conservatory.

Affron is an active opera conductor and has led several works by Philip Glass, including *Galileo Galilei* (in Chicago and London) and the national tour of *Les Enfants Terribles*, in which the composer also performed. She conducted Glass's *Akhmat* for Boston Lyric Opera and Chicago Opera Theater and the premiere of the revised version of Argento's *Miss Havisham's Fire* at Opera Theatre of Saint Louis. Affron has conducted *Die Fledermaus* at Boston Lyric Opera, and Donizetti's *Lucie de Lammermoor* at Glimmerglass Opera.

In recent seasons, Affron has appeared as a guest conductor with Washington Ballet, the National Arts Center of Canada Orchestra, the Kennedy Center Orchestra, Atlanta Ballet, Nashville Ballet, and Oklahoma City Ballet. She has been the Principal Guest Conductor at Boston Ballet since 2018. This is Beatrice's fourth engagement with Miami City Ballet.



## BIOS

### FRANCISCO RENNÓ

COMPANY PIANIST

Francisco Rennó is the winner of several major piano competitions and has appeared as a soloist with orchestras in North and South America. He has given solo and chamber-music recitals throughout the two continents, including appearances at Carnegie Recital Hall and The Phillips Collection.

For ballet performances, he has performed as a soloist with the symphony orchestras of Kansas City, St. Louis, Berkeley, Naples, and on tour with Miami City Ballet at The Kennedy Center, Torino Danza in Torino, Italy and at Les Étés de la Danse in Paris. Rennó was company pianist for the Kansas City Ballet from its inception in 1981, joining Miami City Ballet in 1999. He composed the music to Edward Vilella's "THE WALTZ: Our Lady of Oblivion".



## ON POINT WITH...

### EMILY BROMBERG

Company Position: Principal Soloist

Years with Company: 10

Hometown: Orlando and Boston

Emily Bromberg may look like she's floating when she's on the stage, but off stage is a woman so grounded to the earth with such a tenacity of spirit that it's little wonder as to why she has achieved so much.



#### **We know you have an incredible work ethic. Can you tell us a little bit about where you think that comes from?**

"When I was 11 or 12, I really wanted to attend a summer program but my parents couldn't afford it. So, I asked everyone I knew, what can you do to make money when you're young? A neighbor friend told me that her cousin had a paper route. So, I took myself to the local daily paper and asked for a route. After a year of delivering those papers, I earned enough to pay for one week of the program."

#### **Do you have an alternative "dream" profession or was there ever a time when you thought maybe dance wasn't for you?**

"Yes, before I went to train at Boston Ballet school, I went to a studio that was just not a good fit for me. It killed the joy I had for dance. My mom, thankfully, gave me ten days to seriously think about it. I thought maybe I'd be a vet because I've always loved dogs. Or maybe a lawyer, but in the end, I knew I had to dance."

#### **You were promoted to principal soloist last season after your standout performance in *A Midsummer Night's Dream* and are now busy this season learning all sorts of new repertoire. How do you manage to keep things in balance?**

"I go for walks on the beach with my two dogs, Sabbi and Bruno, at least once a day. Sometimes for hours."

#### **And, what do you do to maintain your energy?**

"To be honest, a Latin meal of rice, beans, meat, and veggies works great for me."

#### **What's one thing you'd tell aspiring dancers?**

"Never let them kill your joy."

#### **What do you think people would be most surprised to learn about you?**

"I really love cars. I drive a manual and my dream car is a Volkswagen GTI."

It's a fitting car for this tiny but mighty dancer who zips and glides across the dance floor.



cut flowers and exquisite floral designs for  
**BOUQUETS** **GALAS, WEDDINGS,** **PERSONAL AND**  
**CUSTOM ORDERS** **SPECIAL OCCASIONS** **CORPORATE EVENTS**

*Follow the petals. . .*



7296 S.W. 40th Street, Miami, FL 33155 • T: 305.702.8248

Toll Free: 1.844.PETALS7 • INFO@PETALCARTEL.COM  
 PETALCARTEL.COM • @PETALCARTELCO

## BACKSTAGE AT THE BALLET



### LOURDES LOPEZ

ARTISTIC DIRECTOR

Lourdes Lopez became Artistic Director of Miami City Ballet in 2012, bringing with her a nearly 40-year career in dance, television, teaching, and arts management. Born in Havana, Cuba in 1958 and raised in Miami, Lopez began taking ballet lessons at the age of five, and when she was eleven, received a full scholarship to the School of American Ballet (SAB). Shortly after her sixteenth birthday, she joined New York City Ballet's corps de ballet, and her star rose quickly. As a soloist and principal dancer, she danced countless featured roles, including Balanchine's *Stravinsky Violin Concerto*, *Liebeslieder Walzer*, *Firebird*, *Serenade*, *Symphony in C*, *Agon*, *The Four Temperaments*, *A Midsummer Night's Dream*, and Robbins' *Dances at a Gathering*, *Glass Pieces*, *Fancy Free*, *In the Night*, *Four Seasons* and *Brandenburg*.

Upon retiring from the company, Lopez joined WNBC-TV in New York as a Cultural Arts reporter, writing and producing feature segments on the arts, artists and arts education. She also served as a full-time senior faculty member at New York's Ballet Academy East and on the dance faculty of Barnard College.

In 2002, she became the Executive Director of The George Balanchine Foundation, where among other things she oversaw the 2004 Balanchine Centennial Celebration. Lopez co-founded The Cuban Artists Fund, which supports Cuban and Cuban-American artists in their endeavors, and has served as a dance panelist for the National Endowment for the Arts. She also co-founded Morphoses with Christopher Wheeldon — a New York-based dance company aiming to revitalize dance through innovative collaborations. In 2011, she also received the prestigious Jerome Robbins Award for her years in dance.

In 2014, she was elected to serve on the Ford Foundation's Board of Trustees, marking the first time an artist was elected to serve on its board.

Under Lopez's direction, Miami City Ballet has become one of the country's premier ballet companies. Celebrating her for her "...admirable stewardship of Miami City Ballet, building upon the company's Balanchine legacy while also embracing the local culture and community of Miami," *Dance Magazine* named her a 2018 recipient of its Dance Magazine Awards. In 2017, the magazine also named her one of 'The Most Influential People in Dance Today'.

Lopez is married to investment banker George Skouras and is the mother of two daughters, Adriel and Calliste.

## BACKSTAGE AT THE BALLET



### TANIA CASTROVERDE MOSKALENKO

EXECUTIVE DIRECTOR

Tania Castroverde Moskalenko joined Miami City Ballet as Executive Director in August 2018, bringing with her more than 20 years of experience leading successful performing arts institutions. Most recently serving as Chief Executive Officer of Chicago's Auditorium Theatre, Castroverde Moskalenko worked to revitalize the organization's financial health and oversaw a dramatic increase in programming, ticket sales and philanthropic support. In 2017, she was named 'Chicagoan of the Year for Dance' by the *Chicago Tribune*.

Prior to her tenure at Auditorium Theatre, Castroverde Moskalenko spent four years as the President and CEO of the Center for the Performing Arts and the Great American Songbook Foundation in Indiana, where she provided both the artistic vision and the strategic direction for the organization. She created and implemented a strategic plan resulting in new programming that expanded the Center's reach, engaged a broader audience, increased board membership, and engaged new partners.

Before that, she spent seven years as the Executive Director of the Germantown Performing Arts Centre in Tennessee.

Castroverde Moskalenko holds a BFA from the University of Memphis and a master's Degree in Philanthropic Studies from Indiana University. In October 2013, she was honored with a Women of Influence award by the Indianapolis Business Journal.

Castroverde Moskalenko returns to Miami after 30 years where she and her family arrived as political refugees from Cuba when she was six years old. She grew up in the city and her parents and extended family continue to live here. She studied classical ballet in Miami and is married to a former Russian ballet dancer, Alexei Moskalenko, who is Assistant Artistic Director of the Youth America Grand Prix. She is the mother of five children.

## BACKSTAGE AT THE BALLET



**GARY SHELDON**

MUSIC DIRECTOR AND PRINCIPAL  
CONDUCTOR | JOINED MCB IN 2010.



**FRANCISCO RENNÓ**

COMPANY PIANIST  
JOINED MCB IN 1999.



**ROMA SOSENKO**

PRINCIPAL BALLET MASTER  
JOINED MCB IN 1999.



**JOAN LATHAM**

BALLET MASTER  
JOINED MCB IN 1992 AS A DANCER.



**ARNOLD QUINTANE**

BALLET MASTER  
JOINED MCB IN 1991 AS A DANCER.



**JOHN HALL**

PRODUCTION & LIGHTING DIRECTOR  
JOINED MCB IN 1995.

# OPUS ONE ORCHESTRA

## GARY SHELDON

MUSIC DIRECTOR AND  
PRINCIPAL CONDUCTOR

### FIRST VIOLINS

Mei Mei Luo  
CONCERTMASTER  
Jeremy Miller  
ASSISTANT CONCERTMASTER  
Erika Venable  
ASSISTANT CONCERTMASTER  
Victoria Stepanenko  
Georgetta Miller  
Tony Seepersad  
Michael O'Gieblyn  
Siobhan Cronin

### SECOND VIOLINS

Dilyana Zlatinova\*  
Sheena Gutierrez  
Ericmar Perez  
Marian Myszko  
Eduardo Martinez  
Akiko Rivera

### VIOLAS

Richard Fleischman\*  
Greg Perrin  
Debbie Spring  
Yael Kleinman-Hyken

### CELLOS

Ashley Garritson\*  
Angela Maleh  
Phillip Lakofsky  
Elizabeth Aron

### BASSES

Janet Clippard\*  
Susan Friend  
Douglas Ferreira

### FLUTES

Karen Fuller\*  
Elizabeth Lu  
Fanny Wyrick-Flax

### OBOES

Erin Gittelsohn\*  
Kendra Hawley

### CLARINETS

Richard Hancock\*  
Molly Wyrick-Flax

### BASS CLARINET

Ciprian Stancioi

### SAXOPHONE

Dannel Espinosa

### BASSOONS

Michael Ellert\*  
Noemi Rivera

### FRENCH HORNS

Hector J Rod\*  
Raul Rodriguez  
Stan Spinola  
Sharon Janezic

### TRUMPETS

Craig Morris\*  
Federico Montes  
Bobby Gallagher

*"Bold, light,  
immediate, intensely  
musical, the dancing  
of Miami City Ballet  
FLIES STRAIGHT  
TO THE HEART."*

New York Times

### TROMBONE

Maciej Pietraszko\*  
David Brubeck  
Hugh Harbison

### TUBA

Calvin Jenkins\*

### TIMPANI

Faye Kokkeler\*

### PERCUSSION

Mikhail Mikhelson\*  
Doug Friend  
Guy St-Amant

### KEYBOARD

Francisco Renno  
Ciro Foderé

\*Principal

Janet Clippard  
ORCHESTRA PERSONNEL  
MANAGER

Jeremy Miller  
ORCHESTRA CONTRACTOR

BOARD OF DIRECTORS



KRISTI JERNIGAN  
CHAIR



CHARLES ADELMAN  
TREASURER, CHAIR -  
FINANCE COMMITTEE



JILL E. BRAUFMAN  
CHAIR - SCHOOL/COMMUNITY  
ENGAGEMENT COMMITTEE



TANIA CASTROVERDE  
MOSKALENKO  
EXECUTIVE DIRECTOR



JEFFREY DAVIS  
CHAIR - DEVELOPMENT  
COMMITTEE



DR. MARGARET EIDSON  
REPRESENTATIVE



ROBERT GOTTLIEB  
REPRESENTATIVE



KATHY GUTTMAN  
REPRESENTATIVE



MAMIE JÕEVEER, ESQ.  
REPRESENTATIVE



DARLA KARLTON  
REPRESENTATIVE



SUSAN D. KRONICK  
REPRESENTATIVE



LOURDES LOPEZ  
ARTISTIC DIRECTOR



MANNY MARQUEZ  
CITY REPRESENTATIVE



JIMMY MORALES  
CITY REPRESENTATIVE



SAUL SANDERS  
CHAIR - AUDIT COMMITTEE



MICHAEL SCHULTZ  
REPRESENTATIVE



VERONICA DE ZAYAS  
CHAIR - GOVERNANCE/  
NOMINATING COMMITTEE

# BOARD OF TRUSTEES



MADELINE ANBINDER



STEPHEN ANBINDER



TOBY LERNER ANSIN  
FOUNDER



MERRILL ASHLEY



NORA BULNES



MARY CIRILLO  
GOLDBERG



ROSALEE C. DAVISON



MALKA FINGOLD



MIRIAM FLAMM



ROBERT FRIEZO



SHEILA O'MALLEY  
FUCHS



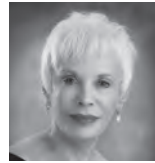
FRANCINELEE HAND



WILLIAM "BILL" JONES



AMY KOHAN



KAREN KRAUSE



MIMI KUPPIN



MARGOT LONDON



PATRICIA E. LOWRY,  
ESQ.



LISA KOTT MASSIRMAN



JENNIFER MYERBERG



ROSALIND RICHTER



JUAN J.S. ROCA M.



OPHELIA ROCA M.



SARA SOLOMON



SUZY WAHBA



GAIL WASSERMAN



DIANA S.C. ZEYDEL

## TRUSTEES EMERITI

ANA-MARIE CODINA BARLICK

MIKE EIDSON

RON ESSERMAN

JACQUELINE KOTT

R. KIRK LONDON\*

GERRI LEBOW\*

RHODA LEVITT

RITA STEIN\*

\*Deceased

## NOT PICTURED

SARA MINSKOFF ALLAN

DINI ALBERT GOLDEN

# INSTITUTIONAL FUNDERS



Miami City Ballet is deeply grateful for the John S. and James L. Knight Foundation's cumulative giving of more than \$10 million in its history.

ANNUAL FUND  
\$250,000 - \$999,999



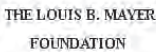
FORD  
FOUNDATION

MIAMI BEACH

\$100,000 - \$249,999



THE JORGE M. PÉREZ  
FAMILY FOUNDATION



\$10,000 - \$99,999



Miami-Dade County support is provided by the Miami-Dade County Department of Cultural Affairs and the Cultural Affairs Council, the Miami-Dade County Mayor and Board of County Commissioners. Performances and programming in Miami Beach is provided with the generous support of the City of Miami Beach and the Cultural Arts Council. Support for Miami City Ballet in the Palm Beaches is generously sponsored in part by the Board of County Commissioners, the Tourist Development Council and the Cultural Council of Palm Beach County. Broward County funding is provided in part by the Broward County Board of County Commissioners as recommended by the Broward Cultural Council. The Company is sponsored in part by the State of Florida, Department of State, Division of Cultural Affairs, and the Florida Council on Arts and Culture.

# CORPORATE COUNCIL

Miami City Ballet salutes our Corporate Council, who help make each season possible through their support.

## CORPORATE LEADER \$25,000 and Above

CANERO IMMIGRATION  
LAW FIRM

FREED  
OF LONDON

Nicklaus  
Children's  
Hospital  
SportsHealth

NSI  
INSURANCE  
GROUP

STEARNS WEAVER MILLER  
WEISSLER ALHADETT & SITTERSON, P.A.

TD Bank  
America's Most Convenient Bank®

WELLS  
FARGO

## CORPORATE CREATOR \$10,000 and Above

Bank of America

CARNIVAL  
CORPORATION & P.L.C.

ConAgra  
Foods

DSS  
DEVELOPMENT SERVICE SOLUTIONS, LLC

OCEAN BANK

SUNTRUST

WYNWOOD  
BUSINESS  
IMPROVEMENT  
DISTRICT

## CORPORATE BENEFACTOR \$5,000 and Above

BLANCA

CALFEE

GT GreenbergTraurig

MU MU

PUBLIC SUPER MARKETS  
CHARITIES

## CORPORATE IN-KIND CONTRIBUTORS

BACARDÍ

CORT

iphone  
INTELLIGENT VOICES

MODERN LUXURY  
MIAMI  
MAGAZINE

Neiman Marcus

Petal  
CARTEL

RUTH'S  
STEAK HOUSE

Selecta  
MAGAZINE

THE SETAI  
MIAMI BEACH

SHORE CLUB  
BOHEM BEACH

SOHO BEACH HOUSE  
MIAMI

The Standard

40  
CUARENTA  
VENDIMIAS

APOLLO SOCIETY

We honor the champions of the arts who have helped to create a legacy for Miami City Ballet through their financial and estate planning. For more information, please contact 305.929.7000 x1402 or email [development@miamicityballet.org](mailto:development@miamicityballet.org)

Madeline and Stephen Anbinder Toby Lerner Ansin Joan Baxt* Dianne and Michael Bienes* Anne and George Chamberlin* Rita and Jerome J. Cohen Pamela and Todd* Cole Gen. Samuel J. Colton Barbara S. Danielson* Dr. Gene Eng* Sanford Evans Betty Florman* John J. and Patricia C. Foody* Trust Batia Fox* Neil and Ina Rae Fox Evelyn R. Gilbert* Isabelle and Irving Goldberg* Dr. Gloria U. Greenberg	Mr. and Mrs. Edwin Greiner Lynn and Emil Hubschman Edwin A. Huston* Jonathan Iho Adelaida Muñiz-Iscoe and Gary Iscoe Sylvia Kaye* Stephen Keller* The Kirk Foundation Eric G. Koskoff* Ralph Lutrin* and Alfred Allan Lewis Susan Mark Frank J. and Adeline Pannizzo The Estate of Norma K. Perdue Estate of Faye A. Phillips* Melissa and William Quesenberry Murray Robbins*	Gary Rugg and Wendy Joseph-Rugg Ethel and David* Sommer Frosene Sonderling* Roberta* and Gary Soren The Lawrence and Marjorie Stoll Foundation Rosalie W. Stone* Fred Teger and Dr. Jo Ann Mayer Sheila Wohl* Lynn and Louis Wolfson*, II Family Foundation, Inc. Dr. Sanford L. and Mrs. Dolores Ziff*  *Deceased
--	--	---

ANNUAL FUND

The Ansin Society

Created in honor of Miami City Ballet’s Founder, Toby Lerner Ansin, The Ansin Society is a circle of supporters, community leaders and partners whose significant contributions are the cornerstone of the Company’s philanthropic support. The Ansin Society was launched in the Company’s historic 30<sup>th</sup> anniversary season with a gift from Charlie Cinnamon to celebrate the extraordinary vision, tenacity and generosity of our Founder. *Represents cumulative giving during the twelve months prior to Nov. 1, 2019.*

\$3,000,000 AND ABOVE

Anonymous  
Kristi and Dean Jernigan  
John S. and James L. Knight  
Foundation

\$500,000 TO \$999,999

Deborah and  
Charles Adelman  
Anonymous  
David Herro and Jay Franke  
Jeffrey Davis and  
Michael T. Miller  
Miami-Dade County Cultural  
Affairs Council

\$250,000 TO \$499,999

Anonymous  
The Ansin Family  
Ford Foundation  
Mary and Saul Sanders

\$100,000 TO \$249,999

Stephen and  
Madeline Anbinder  
Jill Braufman and Daniel Nir  
Margarita and  
Armando Codina  
Cultural Council of Palm  
Beach County  
Rosalee and Richard Davison

Florida Department of State,  
Division of Cultural Affairs  
Kathy and Steve Guttman  
Lawrence Herbert  
Estate of Eric Gilbert Koskoff\*  
Karen and Alan Krause  
Susan D. Kronick and  
Edward Manno Shumsky  
Margot and Allen London  
Louis. B Mayer Foundation  
The Kott & Massirman Families  
Miami-Dade County Office of  
Management and Budget  
The Miami Foundation  
Nicklaus Children’s Hospital

The Jorge M. Perez Family  
Foundation at The  
Miami Foundation  
Hazel Rubin Schultz and  
Michael Schultz  
The Shubert Foundation  
Jean and Eugene Stark  
Estate of Rosalie W. Stone\*  
Lynn and Louis Wolfson\*, II  
Family Foundation, Inc.  
Ruth Wright

#### **\$50,000 TO \$99,999**

Robert S. Benson  
Canero Immigration Law Firm  
Antonia Canero Davis  
Darla and John Karlton  
Lourdes Lopez and  
George Skouras  
Tania and Alexei Moskalkenko  
Sheila O'Malley Fuchs  
and R. Joseph Fuchs

#### **\$25,000 TO \$49,999**

Sarah Arison  
The Batchelor Foundation  
Jane Carroll and Leo Arnoboldi  
Stuart H. Coleman and  
Meryl Rosofsky  
Beth and Ronald Dozoretz  
Dr. Margaret and Mike Eidson  
Janice Feirstein  
Dr. Millie I. Figueredo  
and Zeke Delgado  
Freed of London, Ltd.  
Cindy and Robert Friezo  
Cindy and Robert Friezo  
Foundation  
Ann and Robert Fromer  
Funding Arts Network  
The Kirk Foundation  
Amy and Richard Kohan  
Mimi and Larry Kuppin  
Landmark Charitable  
Foundation, Inc.  
Damaris D.W. Ford  
Rhoda and Morris Levitt  
Frayda and George Lindemann  
Miami Beach Cultural  
Arts Council

Meike and Dominick Miniaci  
Rose Miniaci  
Alvin and Louise Myerberg  
Family Foundation  
Jennifer Myerberg  
National Endowment for the  
Arts: Art Works  
NSI Insurance Group  
Toni and Martin Sosnoff  
Stearns Weaver Miller Weissler  
Alhadeff & Sitterson, P.A.  
TD Bank  
Patricia McKay Verbeeck  
Gail Wasserman  
Wells Fargo Bank

#### **\$15,000 TO \$24,999**

Dini Albert and Michael Golden  
Bank of America  
Stephanie Ansin and  
Spencer Stewart  
Audre D. Carlin  
Carnival Foundation  
Do Unto Others Trust, Inc.  
Alicia Celorio  
Centner Academy  
Nancy Jean Davis  
Deutsche Bank Wealth  
Management  
Dunspough-Dalton Foundation  
Tina and William Lane  
Malka Fingold  
Miriam and Alec\* Flamm  
Foundation for New Education  
Initiatives, Inc.  
Francinelee Hand and  
David Lincoln Siegel  
Dr. Bruce Horten and  
Aaron Lieber  
Christina and Barry Kringstein  
Shana Willinsky Molina  
Sandy and Jesse Morgan  
Claudia Perles  
Samuel I. Newhouse  
Foundation, Inc.  
Robert Gottlieb  
Shutts & Bowen LLP  
Sara Solomon  
Marjorie Stone and  
Rick Rodriguez

Stroock & Stroock & Lavan LLP  
TD Charitable Foundation  
Charmaine and  
J. Randall Waterfield  
Diana Zeydel

#### **\$10,000 TO \$14,999**

Nancy Abbott  
The Herman Abbott Family  
Foundation, Inc.  
Anonymous  
Margaret and Jay Axelrod  
Brickell City Centre  
Dr. Robert and  
Mrs. Karen Chaikin  
Community Foundation  
of Broward  
ConAgra Brands  
Cornelia T. Bailey Foundation  
DSS Consultants  
Funding Arts Broward  
Gillian Fuller  
Denise Glasser  
Susan R. Goldstein  
Susan R. Goldstein, Sunny &  
Abe Rosenberg Foundation,  
Inc.  
Audrey Halperin  
Betty and Rodger Hess  
Mamie and Tarmo Jõeveer  
Stephen A. and  
Ethel L. Keller Fund  
Beth and Jay\* Lotspeich  
Ana Martin-Lavielle, Esq  
Eileen and Henry Meudt  
Ocean Bank  
Ana Ortega  
Ortega Foundation  
David Parker and Marian Davis  
Rundgren Foundation  
SunTrust Foundation  
Winston & Strawn  
Wynwood Business  
Improvement District

## Artist's Circle

The Artist's Circle is an influential group of MCB members who provide generous annual support. *Represents cumulative giving during the twelve months prior to Nov. 1, 2019.*

### \$7,500 TO \$9,999

Anonymous  
Helen and John Cornell  
Charlene and Ron Esserman  
Ileana Janoura  
Vicky and Sanjay Kamlani  
Miu Miu  
Terry and Noel Neelands  
Kamal Pathak, MD  
Publix Super Markets Charities  
William Racolin and  
Alison Williams  
Michael and Roberto Raynes  
Dr. Bruce Halpryn and  
Mr. Chas Riebe  
Jodi and Etai Timna  
Marcos Tychobrojcher and  
George Dandridge

### \$5,000 TO \$7,499

Sari and Arthur Agatston  
Stephanie and  
Dr. Norman Altman  
Anonymous  
Alberto A. Arias and  
Wood Kinnard  
The I. Jules Arkin family  
Foundation  
Bob Avian and Peter Pileski  
AXS Law Group  
Roy Bartolomei and  
Peter Wronsky  
Nancy and Jon Batchelor  
Trish and Dan Bell  
Bill Ussery Motors, Inc.  
Joyce Bloch  
Diane and Siavosh Bozorgi  
Elena and John Brim  
Rita and Charles Bronfman  
Calfee, Halter & Griswold LLP  
Anirays Bolivar Camino  
Dr. Enrique G. Casuso  
and Ms. Alina Monnar  
Kay and Elliot Cattarulla  
Jacqueline and Jerome Chaves  
Citizens Interested in Arts, Inc.  
Evelyn and Norman Cohan\*  
The Cowles Charitable Trust  
Ronald Demeo

Eggersmann USA  
Jamie and Asha Elias  
Patricia and Howard Farber  
Neil and Ina Rae Fox  
Joan and David Genser  
Mrs. Joan Getz  
Bonnie and David Gold  
Merle and Stanley Goldstein  
Monique and Dan Goldwasser  
Eduardo Gonzalez and  
Jerry Cody  
Danielle Gonzalez  
Alvin Schechter and  
Janine Gordon  
Greenberg Traurig  
Rose Ellen and Gerald\* Greene  
Mr. and Mrs. Frederick Guest  
Diane Star Heller\*  
Marcia and Joel Hochberg  
Olga and Eric Jorgensen  
William Karatz and Joan Smith  
Wendy T. Kulberg  
Kinga and Edward Lampert  
Samantha Lang  
Iris and Lawrence Lerner  
Larry Levinson and Joe DeLeo  
Ralph Lutrin\* and  
Alfred Allan Lewis  
Dr. Bruce Horten and  
Aaron Lieber  
Cynthia and Peter Liebman  
Martaligia Lopez-Cantera  
and Carlos Lopez  
Cantera Lopez-Cantera  
Charitable Foundation  
Simone Lutgert  
Nancy and Edward Madden  
Magic City Casino  
Ruth Ann Marshall and  
Patricia Houtz  
Camille and Patrick McDowell  
Dr. Elisabeth A. McKeen  
Olga and David Melin  
Lila Menowitz  
Dr. and Mrs. Lewis N. Michaels  
Nina Miguel  
Linda and Ed Morse  
Mike and Renny Nachwalter  
Nordstrom, Inc.

Nancy and Ellis Parker  
Geraldine Polinger  
Howard and Geraldine Polinger  
Foundation  
Christy and Earl Powell  
Claudia and Irving\* Redel  
Blanca Commercial Real Estate  
Peter Romero  
Royal Caribbean International  
Carmen and Rudy Ruiz  
Karen Safarik  
Linda Stocknoff and  
Morrie Sandler  
Lynn and Meyer Sapoff  
Selma Ankist Family Trust  
Clark Nobil Trustee  
Diane and Irving\* Siegel  
Diane and Thomas Smith  
Thomas W. Smith Foundation Inc  
Mark Sonnino  
SQA Foundation  
Isobel and Roger Sturgeon  
Rosalind and Charles Stuzin  
Peace Sullivan  
TeamLogic IT  
Cynthia and Glen Tupler  
Brenton Ver Ploeg  
Ver Ploeg & Lumpkin, P.A.  
Helen Welch  
Bonnie Whited  
Alexa and Adam Wolman  
Robin Woodard  
Judy and M. Richard\* Wyman

### \$3,000 TO \$4,999

Amanda and Matt Adler  
Lou Ann Alsip  
Joan and Clark Ambrose  
Ansin Foundation - WSVN 7  
Dr. and Mrs. Robert Appelman  
Laurie and Louis Appignani  
Gabriele and Frank Armstrong  
Sharon and Elliot Asbel  
Daniel Ayers and  
Anthony P. Seguino  
Melissa and Jonathan Babicka  
Stephen M. Bander  
Maria Bechily-Hodes  
and Scott Hodes

Betty Madigan Brandt  
 Ray Breslin and Patrick Pecoraro  
 Dr. Amy Buchman and  
   Vicki Haupt  
 Mary Jo and John Bulfin  
 Esta Jo Busker  
 Dr. Peter B. Cinelli and  
   Michael LiPuma  
 Dr. and Mrs. Bernard H. Cohen  
 Heidi Cooper  
 Martin L. Coyne and  
   Melissa Ann Coyne  
   Coyne Family Foundation  
 Douglas S. Cramer and  
   Hubert Bush  
 Gina and John Despres Maria  
 Asela and Gonzalo A. Diaz  
 Elizabeth and Ralph\* Dinlocker  
 Louis N. Casset Family  
   Foundation  
   Vanessa Elias-Krelstein  
 Diane and Edward Eisenberg  
 Jo Ann Engelhardt  
 Sheila and Alec Engelstein  
 Mark Feldberg and Emilyn Page  
 Rona Forstadt  
 Sharyn Frankel and  
   Marilyn Silverman  
 Naomi and Joel Freedman  
 Marvin Ross Friedman  
   and Adrienne bon Haes  
 Ellen Sanders Galkin  
 Marie and Robert Gallagher  
 Pamela J. Garrison  
 Judith and Phillip George  
 Cristy and David Giacomini  
 Susan M. Ginns  
 Ellen and David\* Goldschild  
 Gene Goldstein  
 Corinne and Jerry Gorelick  
 Cheryl Gowdy  
 Vicki and Michael Greenberg  
 Evelyn and Bruce Greer  
 Renee Gross  
 Victoria Gutierrez  
 Beatriz and Paul Hicks  
 Diane and Kenneth Hipkins  
 Beth Holland  
 Lisa Huertas  
 Veronica de Zayas and  
   Andrew Ingalls  
 Tyby and Gerry Klein

Dr. Robert and  
   Mrs. Miriam\* Knapp  
 Sylvana Klein  
 Annette Z. Kolman-Irom  
 Cecilie Jorgensen  
 David Kislak\*, Joanne Leibovit,  
   and Stephanie Tampusi  
 Ivonne and Adam Leichtling  
 Bonnie Lerner  
   Bonnie Lerner Fund at The  
   Miami Foundation  
 Barbara C. Levin  
 Elaine Levine  
 Marie and Harley Lippman  
 Mapfre: Luis Insurance  
 Pablo and Margie Martin Luis  
 Uliana Malysenko  
 Susan and Joel Martin  
 Cuqui and Isaac Matz  
 Georgia and Brian McDonough  
 Sergio Mendoza  
 Michelle Danoff Merlin and  
   Robert Merlin  
 Inna and Miroslav Mladenovic  
 Sheila Mondry  
 Peter S. Mozino Foundation  
 Joan Readding  
 Barbara Mozino Seegul and  
   H. David Seegul  
 Ted Mozino  
 Betty Lou C. and  
   William T. Nanovsky  
 Christine and Alex Niemeyer  
 Robert O'Donnell  
 Michael Ohevzion  
 Lamis and John Olsen  
 Michael S. Pasano  
 William S. Pollak  
 Harriet and Henry A. Pownall  
 Percy Rivington Pyne IV  
 Juan Quiñones  
 Maggie and  
   Guillermo Retchkiman  
 Beverly and Ed Robbins  
 Francene and Charles Rodgers  
 Donna and Carmen Romeo  
 Hunter Runnette and  
   Mark Vandenbosch  
 Diane and Gilbert Lee Sandler  
 Monica Cantera-Serralta  
 Diana and Andrew Schultz  
 Audrey P. Schwartz

Hon. Patricia Seitz and  
   Alan Greer  
 Jane and John Shalam  
 Carol and Dr. Stanley Shapiro  
 Barbara Sherman  
 Lois H. Siegel  
 Dr. Ellen and Gerald Sigal  
 Valerie Sitler  
 Carol and Frank Sobel  
 Edith and Martin\* Stein  
 Mark Steinberg and  
   Dennis Edwards  
 Jim Stepp and Peter Zimmer  
 Bonnie and Steven Stern  
 Siobhan and Mark Sutcliffe  
 Carmen Tagle and Alan Rose  
 Mrs. Anne B. Tanen  
 Joni and Stanley G. Tate  
 Miriam and Troy Templeton  
 Jacqueline and Albert Togut  
 Deborah and Michael Troner  
 Lourdes Tudela  
 Tina and Alex Van Der Ven  
 Gabriel Villar del Saz  
 Dr. Norma J. Schulman-Waltzer  
   and Neil Waltzer  
 Irene and Dr. Malvin Weinberger  
 Judith and Marvin Weinstein  
 Dr. and Mrs. Michael A. Weitz  
 Lynne Wheat  
 Jan Willinger  
 Betty and Michael Wohl  
 Denise and Dr. Michael Zeide

## Friends

Friends memberships allow individuals to connect directly to the art and artists they love, while providing essential support to Miami City Ballet each year. *Represents cumulative giving during the twelve months prior to Nov. 1, 2019.*

### \$2,000 TO \$2,999

Willa Rose and  
Edmund Abramson  
Mr. & Mrs. Richard Behr  
Joan and Irving Bolotin  
Shelly and Dr. Barry J. Cutler  
Maureen Daffner  
Stephanie Diaz  
Faena Hotel Miami Beach  
Cari Fund  
Mary and Howard Frank  
Linda and Glenn Fuller  
Phoebe and Dr. Donald Giddon  
GRAFF Diamonds Bal Harbour  
Linda Halperin  
Sally-Jane Heit  
Vivien and Melvin Howard  
Isabel and Marvin\* H. Leibowitz  
Leibowitz Charitable Trust  
Shirley Levy and  
Sarah Salter-Levy  
Marilyn and Richard\* Mendelson  
Joanne Mercurio  
Bronwyn Miller  
Amy and Eric Peterson  
Mimi and Robert\* Rieder  
Dr. and Mrs. Robert Rosenblum  
Linda and Harold Rosenson  
Raquel and Michael Scheck  
Clara Sredni  
Kirsten Vogel  
Warren Henry Auto Group

### \$1,000 TO \$1,999

Edward Abraham and  
Norma-May Isakow  
Isabelle and Neal\* Amdur  
Anonymous  
Tania Babic  
Olga Bahdanava  
Daiva Bajorunas  
Lauren Beall  
Best Foundation  
Susanne Birbragher  
Rita and Ernest Bogen  
Joseph D. Bolton  
Renee Lopez Cantera

Margaret Fronefield Cardillo  
Sydney Cappel  
Harvey Coleman  
Donald Comras  
Francesca Craven  
Barbara Dacquino and  
Thomas Richerson  
Joseph De Carlo, Jr. and  
Nancy Kanter  
Deane M. Dorwart  
Diana Dubinsky  
Mrs. Elizabeth H. Dudley  
Rabia Duggan  
Lori Dunnigan  
Lynn and Stuart Edinoff  
Elaine and Edward Eskind  
Sanford Evans  
Claire Fair  
Dr. Alfred and Susan Feingold  
Lisa Frankel  
Elena Freyre  
Susan and Alan Furst  
Mr. Gerald Fultz  
Rachel Furst  
Joan and John Galiardo  
Susan and David Galler  
Laura Garcia  
Melinda and John Geberth  
Terri and Stephen Geifman  
Susan and Laurence Goldfein  
John Good  
Lora and Kieth Gordon  
Mr. and Mrs. K. Lawrence Gragg  
John Haley  
Elizabeth Halverstam  
The Israel, Rose, Henry & Robert  
Wiener Charitable Foundation  
Lynn Wiener  
Alice and Mike Jackson  
Mr. William J. Jones  
Sheila Josephberg  
Sue and Eugene Karp  
Rebecca and Arnaud Karsenti  
Glenn Kaufhold and  
Andres Clavijo  
Dr. Fred and Sandi Khani  
Sue and Dr. Irwin Klau

Maura Kobusch  
Valerie Kohlmann  
Leona Kosh  
Barbara Palmer and  
George Kramer  
Jose Lamela  
Edie Langner and Michael Coles  
Marian and Stuart Lemle  
Winston Lett, Esq. and  
Frank Benoit  
Roselyn Lichtman  
Elizabeth and Marcus Long  
Courtney Lord  
Bill Lough and Barbara Pinaire  
Gloria Luria  
Danielle and Osvaldo Maffei  
David and Sally Manz  
Atty. and Mrs. Harry D. Martin  
Mildrey Mathewes  
Jennifer McShane  
Laura Miller  
Danielle Milota  
Linda Mondragon  
Joan Morrison  
Dr. and Mrs. Samuel Mowerman  
Eduardo and Yael Muller  
Joyce and William Niles  
Insu and James Nuzzi  
Carol and Mike Park  
Perrotti Family Trust  
Tammie Plant  
Sue Rapperport  
Senator Nan and Mr. David Rich  
Kenneth Rivkin and  
Deborah Slott  
Mr. Richard Roer  
Sheryl Rosenfield  
Carol and Herb Rothman  
Adele and Dr. Joel Sandberg  
Susan Sandford  
Mr. and Mrs. Charles Sands  
Jacqueline and David Savir  
Leah and Bennett\* Schlenger  
Martin Segal  
Seren Shvo  
Dr. Harvey and Drazia Simon  
Sandra and Charles\* Simon

Culver Smith  
 Alice and Glenn Spear  
 Nikki and Robert Squire  
 Nancy Stavits  
 Dr. Steven Steinberg and  
   Dr. Jeanette Mladenovic  
 Norma Suarez  
 Ellen Sussman  
 Sandra Thompson  
 D'vera Topol  
 Ana Sora-Vadillo and  
   Alberto E. Vadillo, MD  
 Elina Weisberg  
 Sara Wiener  
 Linda K. Wilson  
 Steven Wilson  
 Bruce Wolfe and  
   Mark Henderson  
 Alene and Sid Workman  
 Abigail Wyss  
 Kara Yarchkin  
 Maria Zaffaroni  
 Nicole Zinn

**\$500 TO \$999**

Robin and Richard Abedon  
 Terry and Sheldon Adelman  
 Ruth and Robert Albertson  
 Dale Allen  
 Paul Anagnostos and Brian Price  
 Phyllis Anikstein  
 Anonymous  
 Jolie Balido  
 JoAnne and Michael Bander  
 Robert Barra  
 Mary and Thomas Becht  
 Marylin and Fred Berens  
 Helene Berger  
 Jill Berke  
 Jacali International  
   Toby Berman  
 Mr. and Mrs. David Bernstein  
 Henry D. Blinder  
 Anne Bodnar  
 Jalila Bouchareb  
 Loretta and Laurence Brody  
 Nancy and Peter Brown  
 Lyle and Joan Brundage  
 Michael Buchanan  
 Carole Burack  
 Dr. and Mrs. Jack Burstiner  
 Mary and Thomas Cadigan  
 Rona and Edward Casel

Stephanie Chaissan  
 Claire and Jon Chassen  
 Ross Claiborne  
 Phyllis Cohen  
 Suzi Rudd  
 Cohen  
 Carolyn Coleman and Lisa Evans  
 Lucette B. Comer  
 Camila Cote  
 Wileen T. Coyne  
 Duke Dang and Charles E. Rosen  
 Pamela A. Downey  
 Leigh and William Duff  
 Dr. Richard B. Edelman  
   and Nancy Avitabile  
 Kim and Al Eiber  
 Joan Fiedler  
 Sheldon Finkel  
 Amelia Finkle  
 Constance and Wood Fischer  
 Dr. Rebecca Fox  
 Stanford W. Freedman  
 Dr. and Mrs. Rudolph J. Frei  
 Lenore Gaynor  
 Donna Genet  
 Mr. and Mrs. Isaac Gilinski  
 Joanne and Ron Goldfarb  
 Ramazi Gotsiridze  
 Ragnhild Greve-Isdahl  
 Alice Grossman  
 Arlene and Richard Haft  
 Dr. and Mrs. Kermit\* J. Halperin  
 Dr. Bernard Horowitz  
 Patrick Hunt  
 Francesca Craven  
 Dr. Stanley and Judy Jacobs  
 Melissa Kalman  
 Jane Karp  
 Erin Knight  
 Louise and Stephen Kornfeld  
 Lisse Kravetz  
 Josh Levine  
 Mr. and Mrs Irwin Levy  
 Gregory Liebman  
 Patricia Guinn and  
   Jared Lilienstein  
 Sarina and Jerol M. Lind  
 Ronald Magers  
 Claudia Maghidman  
 Phyllis and Laurence Malmuth  
 Mr. and Mrs. Larry Marbert  
 Leo Mazur  
 Richard Milstein and Eric Hankin

Beverly Myers  
 Cruz H. Otazo and Virginia Otazo  
 Mrs. Anita Pearlman  
   and Mr. Ronald Schneider  
 Charles Primer  
 Louis Proietto  
 Diana Puig  
 Michele and Frank Rella  
 Michael and Fran Richmond  
 Abby and Reid Ruttenberg  
 Nicole Sayfie  
 Mr. and Mrs. Richard J. Schlenger  
 Karl W. Schwarz  
 Larry Siedlik and  
   Carmen Sanchez  
 Mr. and Mrs. Morrie H. Siegel  
 Dr. and Mrs. Bernard Silverstein  
 Toby Sloane  
 Audrey Weiner and  
   Jeffrey Solomon  
 Alan B. Spitzer  
 Mark and Katie Stalker  
 Harold L. Strauss  
 Susan Sullivan  
 Cheryl Swack  
 Linda and Myron Teitelbaum  
 Amy E. Tobin  
 Dr. and Mrs. James E. Vaux, Jr.  
 Thomas Wade and Daniel Roose  
 Lenore and Donald Warren  
 Robert Warren  
 Mr. Stuart and Dr. Bonnie Wolf  
 Katy Yang-Page  
 Dr. Alan A. Zelcer  
 Johann Zietsman

*\*Deceased*

## GIFTS IN HONOR

**Charles Adelman**

Gerry and Hank Alpert  
Bernardine Atkins  
Robert and Robin Cohen  
Duke Dang and Charles E. Rosen  
Joseph De Carlo, Jr. and  
Nancy Kanter  
Sharon and Timothy Harris  
Donna Rich  
Andrea Schechter

**Deborah Adelman**

Duke Dang and  
Charles E. Rosen  
Donna Rich

**Toby Lerner Ansin**

Wileen T. Coyne  
Steve and Michele Klausner  
Dianne and Sid Lambersky  
Hon. Patricia Seitz and  
Alan Greer  
Dr. & Mrs. Bernard Silverstein  
Peace Sullivan

**Rita and Jerome Cohen**

Nora and Ted Weinreich

**Joe Deleo**

Nora and Ted Weinreich

**Sanford Evans**

Steve and Michele Klausner

**Joe DeLeo**

Nora and Ted Weinreich

**James Freeze**

Deborah Heller and Ann Sanders

**Cindy and Robert Friezo**

Iva Kosovic

**Gradon Hadaway**

Suzanne C. Kraus

**Orene T. Harris**

Susan Z. Bloom  
Israel, Rose, Henry & Robert  
Wiener Charitable Foundation  
Lynn Wiener

**Lawrence Herbert**

Bonnie Pfeifer Evans  
Louise and Stephen Kornfeld  
H. Irwin and Ellen Levy  
Michele and Frank Rella

**Lisa Huertas**

Alexander Bruner  
Margaret C. Donnelley  
Elizabeth H. Dudley  
Jo Ann Engelhardt  
Michele Kaufman

**Dean Jernigan**

John Good

**Kristi Jernigan**

John Good  
Alice and Mike Jackson  
Gail Wasserman

**Susan Kronick**

Adele Jean Gottdiener

**Margot and Allen London**

Mr. and Mrs. Edward Eisenberg  
Sheldon Finkel  
Arlene and Richard Haft  
Linda and Edward Morse

**Lourdes Lopez**

Wileen T. Coyne  
Sanford Evans

**Lisa and Jay Massirman**

Yael and Eduardo Muller  
Susan Schaffer and  
Dr. Ronald Gup

**James Perez**

Rose Price

**Saul Sanders**

Fran Miller  
James and Insu Nuzzi

**Matt Saurusaitis**

Nancy Stavits  
Rose Price

**Chase Swatosh**

Suzi Rudd Cohen

**Frank Tonkonow**

Alice and Glenn Spear

**Nora Weinreich**

Corwin Family Charitable  
Foundation  
Kerry Muskat  
Mr. and Dr. Barton Udell

## GIFTS IN MEMORY

**Abraham and Ann Buchman**

Dr. Amy Buchman and  
Vicki Haupt

**Mary Lou Cokl**

Karen Spigler

**Patricia Frank**

Priscilla Adler

**Richard M. Galkin**

Ellen Sanders Galkin

**Murray Hazan**

Barbara Hazan

**Kathleen D. Kallmeyer**

Maureen Daffner

**Eric Koskoff**

Dr. Amy Buchman and  
Vicki Haupt

**Isabel Toledo**

Melissa and Bill Quesenberry

**Hope Eric Verbeeck**

Patricia McKay Verbeeck

*Represents cumulative giving  
during the twelve months prior  
to Nov. 1, 2019.*

# □ MIAMI CITY BALLET



Miami City Ballet wishes to recognize  
**ANA-MARIE CODINA BARLICK**  
for her leadership and service as  
Chair of Miami City Ballet Board of Trustees  
(2011 to 2014).

---

We also owe our deepest gratitude to the entire  
**CODINA FAMILY**  
for their steadfast support of Miami City Ballet.

---

In particular, their leadership and support of our  
New Beginnings Campaign 2014 which was  
transformational for our company and school.

**THANK YOU!**

# ADMINISTRATION

## **Lourdes Lopez**

Artistic Director

## **Tania Castroverde Moskalenko**

Executive Director

## **ARTISTIC**

Director of Artistic Administration:

Anne-Camille Hersh

Company Manager: Michael Sebesto

## **PRODUCTION AND WARDROBE**

Production and Lighting Director: John Hall

Production Stage Manager: Kelly Brown

Assistant Stage Manager:

Gabe Friend-Jones

Head Carpenter: Brian Harris

Property Master: Marc Stoudt

Assistant Property Master: Gary Darling

Head Electrician: William Schwendel

Assistant Electrician: Apon Nichols

Sound Engineer: Sean M. Deceunick

In Memorium: Richard Carter

Director of Costume Department:

Eleanor Wolfe

Wardrobe Master: Ricardo Asturias

Wardrobe Mistress: Jennifer Conrad

Costume Shop Coordinator:

Pamela Tarantino

Seamstresses: Julia Villalobos,

Carmen Wilson

## **DEVELOPMENT**

Chief Development Officer: Elena Quevedo

Senior Director of Donor Relations:

Courtney K. Ford

Senior Director, Major Gifts:

Orene Tross-Harris

Director of Special Events: Lisa Pollack

Director of Foundation and

Government Relations: Michele Scanlan

Associate Director of Membership:

Gradon Hadaway

Manager of Foundation and

Government Relations:

Melissa Rosko, CFRE

Manager of Development and

Community Engagement—Palm Beach:

Meghan Bulfin Monteiro

Donor Relations Manager:

Isabel Von der Mühl

Development Assistant: Sydney Hartman

Development Consultants:

Susan Galler, Glenn Kaufhold,

Ruth Robinson

## **MARKETING**

Chief Marketing Officer: Julii Oh

Director of Marketing &

Audience Acquisition: Stephanie Zappala

Marketing Services Manager:

Maggie Adler Sebesto

Marketing Manager: Anne Mortomore

Database Manager: Sandra Rodriguez

Marketing Assistant: Eileen López

Box Office Manager: Matt Saurusaitis

Customer Relations Assistant Manager:

Maritza Castro

Customer Service Representatives:

Roger Mejia

Kaaren Mils

Sergio Rodriguez

Claudia Roque

Karen Silva

## **COMMUNITY ENGAGEMENT**

Chief Community Engagement Officer:

AnaMaria Correa

Community Engagement

Programs Manager: Tharesa Z. Perry

Arts in Education Program Manager:

Melissa Anduiza

Community Engagement Coordinator:

Marie Colom

Teaching Artists: Vanya Allen, Meredith

Barton, Stephanie Fuentes, Jennifer Puig,

Kelly Robotham

**Ballet Bus Group Leaders:** Gisel Hernandez,  
Rhonda Hopkins, Kristina M. Jackson

Vivian Gonzalez  
Yraima Menendez  
Teresa Valdivia

### **FINANCE AND OPERATIONS**

**Director of Finance:** John J. Shumaker, C.P.A.  
**Senior Accountant:** Jesus Valdes  
**Payroll Coordinator:** Marisa Rios-Lopez  
**Staff Accountant:** Carlos Lopez  
**Human Resources Director:** Lina Aguirre  
**Office Manager and Executive Assistant:**  
Joy Stanfield  
**Board Liaison and Executive Coordinator:**  
Kelsey Irl

### **MIAMI CITY BALLET SCHOOL**

**Chair:** Lourdes Lopez  
**School Artistic Director:** Arantxa Ochoa  
**Managing Director:** Lisa De Ravel  
**School Operations Manager:**  
Jessica Bork  
**School Programs Manager:** Brian Ganan  
**Student Life and Housing Manager:**  
Roslyn Ruiz  
**Principal Faculty:** Alexander Iziliaev,  
Reyneris Reyes

#### **Faculty:**

Mariana Alvarez Brake  
Kareen Pauld Camargo  
Michele Chaviano  
Sara Franco  
Brittany Kernohan  
Claudia Lezcano  
Rosa Mercedes  
Maribel Modrono  
Herman Payne  
DeAnn Petruschke  
Emma Reed  
Emily Ricca  
Francis Veyette  
Antonella Vichidomini  
Toranika Washington

#### **Pianists:**

Marianela Castro  
Juvenal Correa-Salas  
Gladys Fariñas

### **PROFESSIONAL CONSULTANTS**

**Employment and Labor Law:** Lisa Berg, Esq.  
— Stearns Weaver Miller, et al, P.A.  
**Immigration Law:** Glenn Rissman, Esq. —  
Stearns Weaver Miller, et al, P.A.  
**Auditor:** Robbins and Moroney, P.A.

### **MEDICAL PROVIDERS**

**Company Physician:** Kathleen Davenport MD  
**Director of Dance Medicine:**  
Kathleen Bower PT, DPT, MTC  
**Physical Therapist:** Elizabeth Maples PT, DPT  
**Massage Therapist:** Alexis Somoano LMT

□ **MIAMI  
CITY  
BALLET  
SCHOOL**



WINTER  
COMMUNITY  
DIVISION

# DROP IN & DANCE

CLASSES FOR KIDS, TEENS AND ADULTS

**ADVANCED BALLET**

**BALLET 101**

**BEGINNER BALLET**

**CONTEMPORARY**

**HIP HOP (ADULTS)**

**HIP HOP (KIDS)**

**INTERMEDIATE BALLET**

**LATIN NIGHT**

**MUSICAL THEATER JAZZ**

**TODDLER & ME**

**TUMBLING**

Read class descriptions and teacher bios, buy your Class Card and check the most up to date calendar at [miamicityballet.org/school](http://miamicityballet.org/school).

Photo © Alexander Iziliaev.